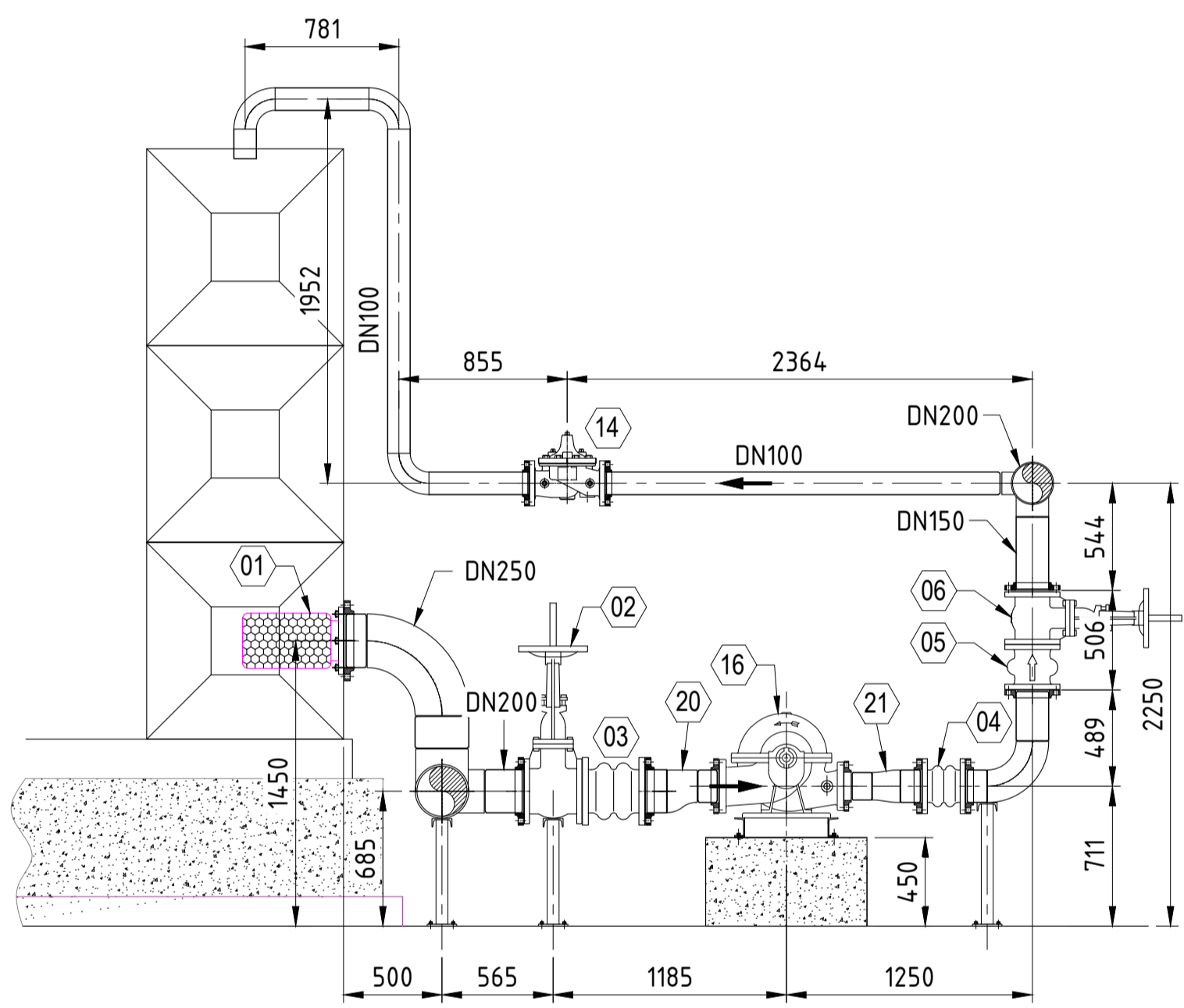
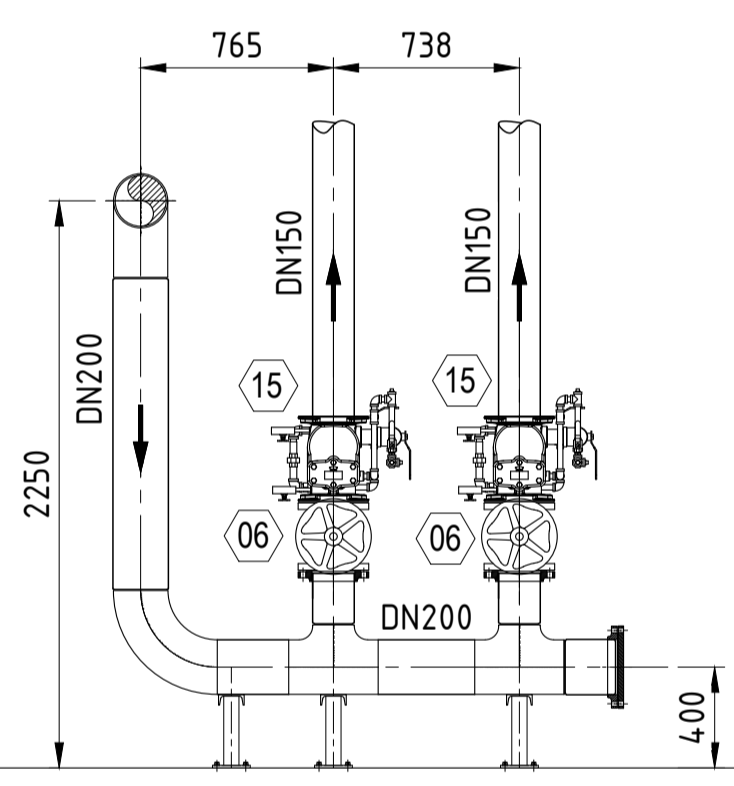


EQUIPMENT LIST

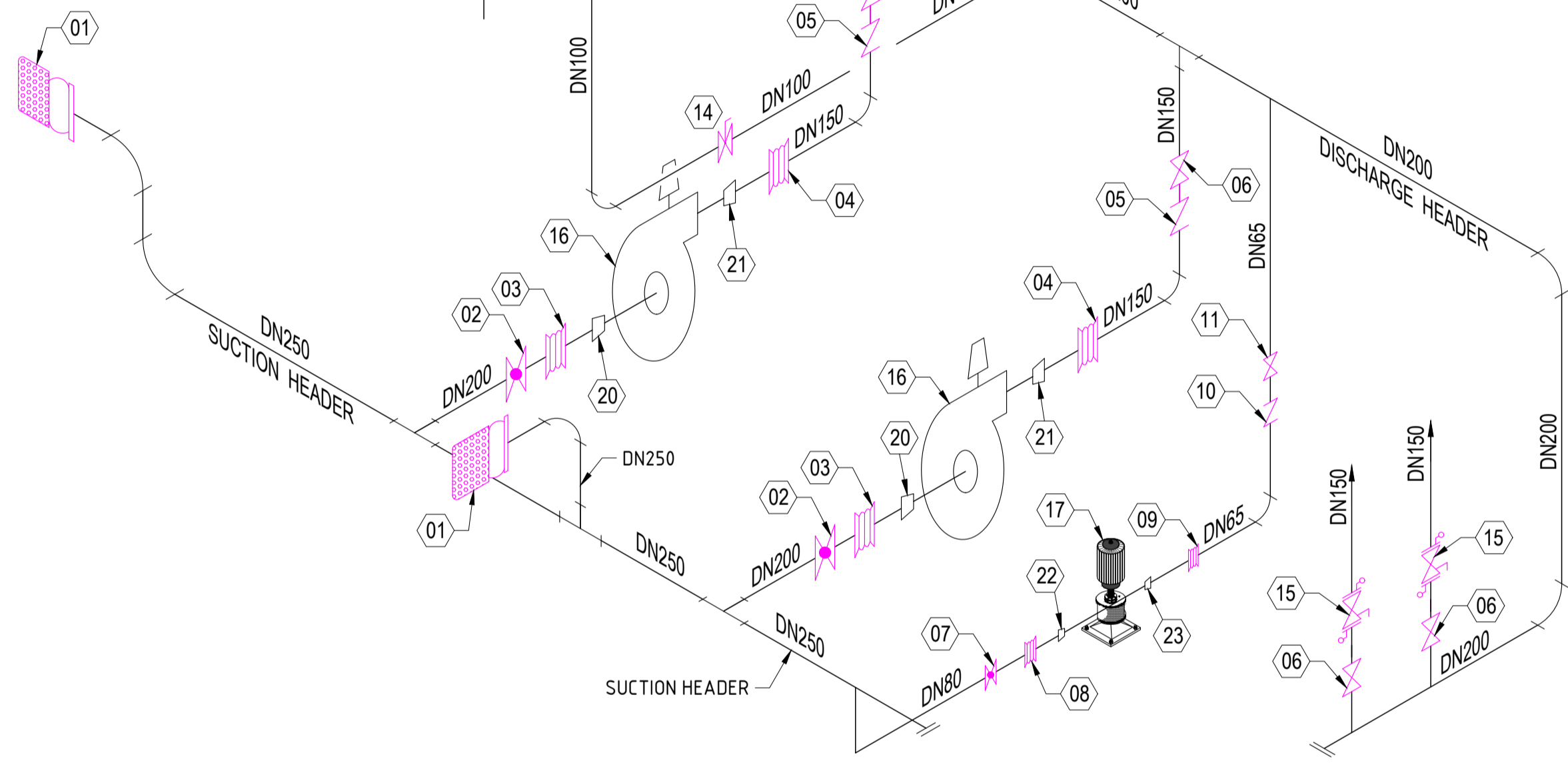
TAG NO.	DESCRIPTION	QTY
01	Ø10" SUCTION STRAINER	02
02	Ø8" GATE VALVE WITH SUPERVISORY SWITCH	02
03	Ø8" FLEXIBLE CONNECTOR	02
04	Ø6" FLEXIBLE CONNECTOR	02
05	Ø6" CHECK VALVE	02
06	Ø6" GATE VALVE WITH SUPERVISORY SWITCH	04
07	Ø3" GATE VALVE WITH SUPERVISORY SWITCH	01
08	Ø3" FLEXIBLE CONNECTOR	01
09	Ø2.5" FLEXIBLE CONNECTOR	01
10	Ø2.5" CHECK VALVE	01
11	Ø2.5" GATE VALVE WITH SUPERVISORY SWITCH	01
12	Ø6" GLOBE VALVE	01
13	Ø6" FLOW METER	01
14	Ø4" PRESSURE RELIEF VALVE	01
15	Ø6" ALARM CHECK VALVE (ICV)	02
16	FIRE PUMP 1000 gpm@120 psi	02
17	JOCKEY PUMP 50 gpm@128 psi	01
18	MAIN PUMP CONTROLLER	02
19	JOCKEY PUMP CONTROLLER	01
20	ECCENTRIC REDUCER 8"x6"	02
21	CONCENTRIC REDUCER 6"x5"	02
22	ECCENTRIC REDUCER 3"x1.25"	01
23	CONCENTRIC RED 2.5"x1.25"	01



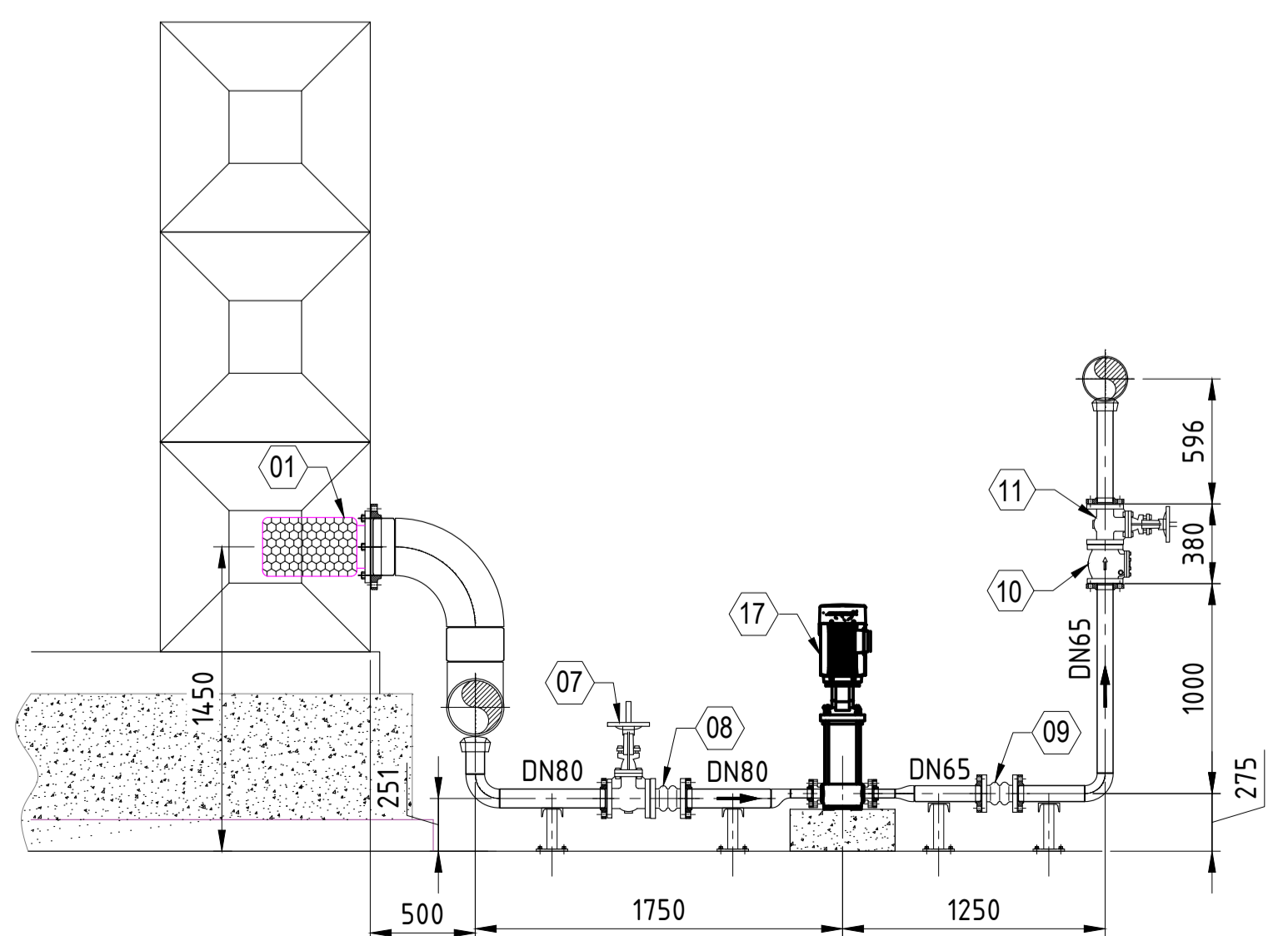
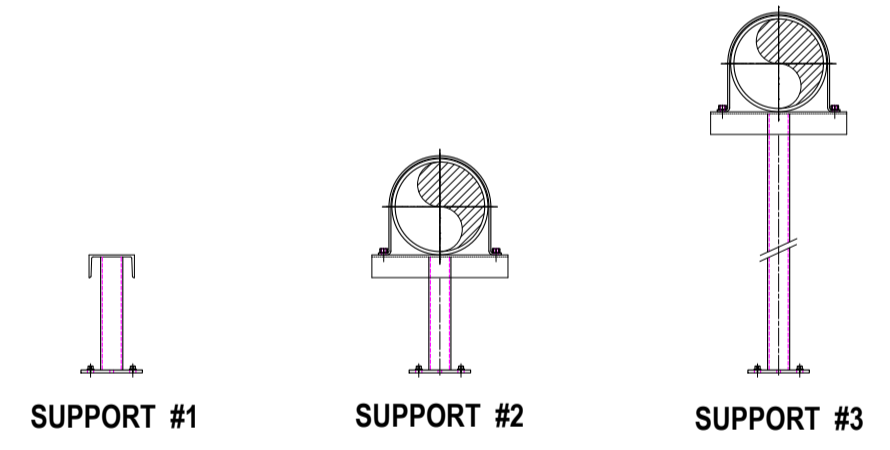
SECTION A-A



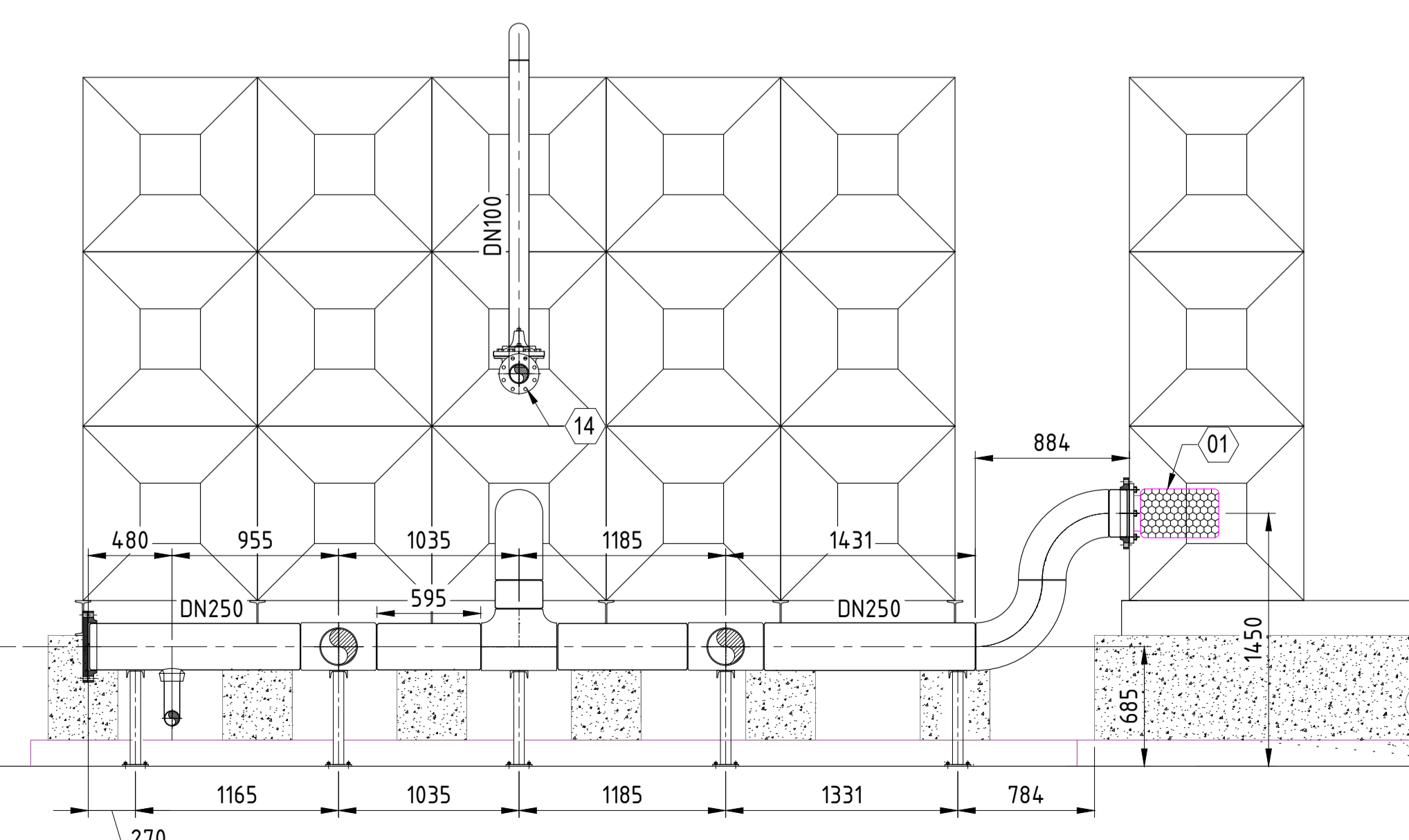
SECTION E-E



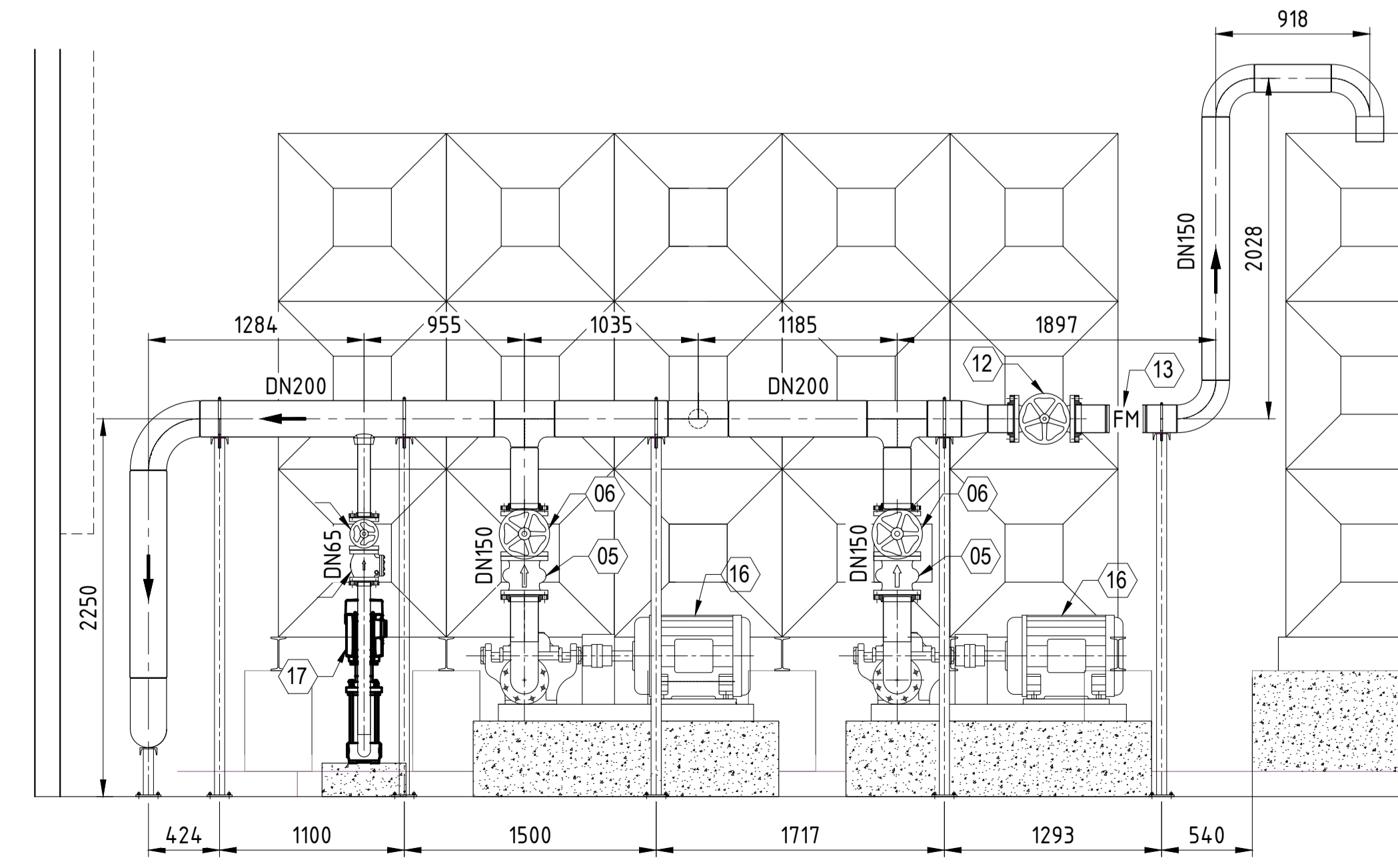
FIRE PUMP DESIGN



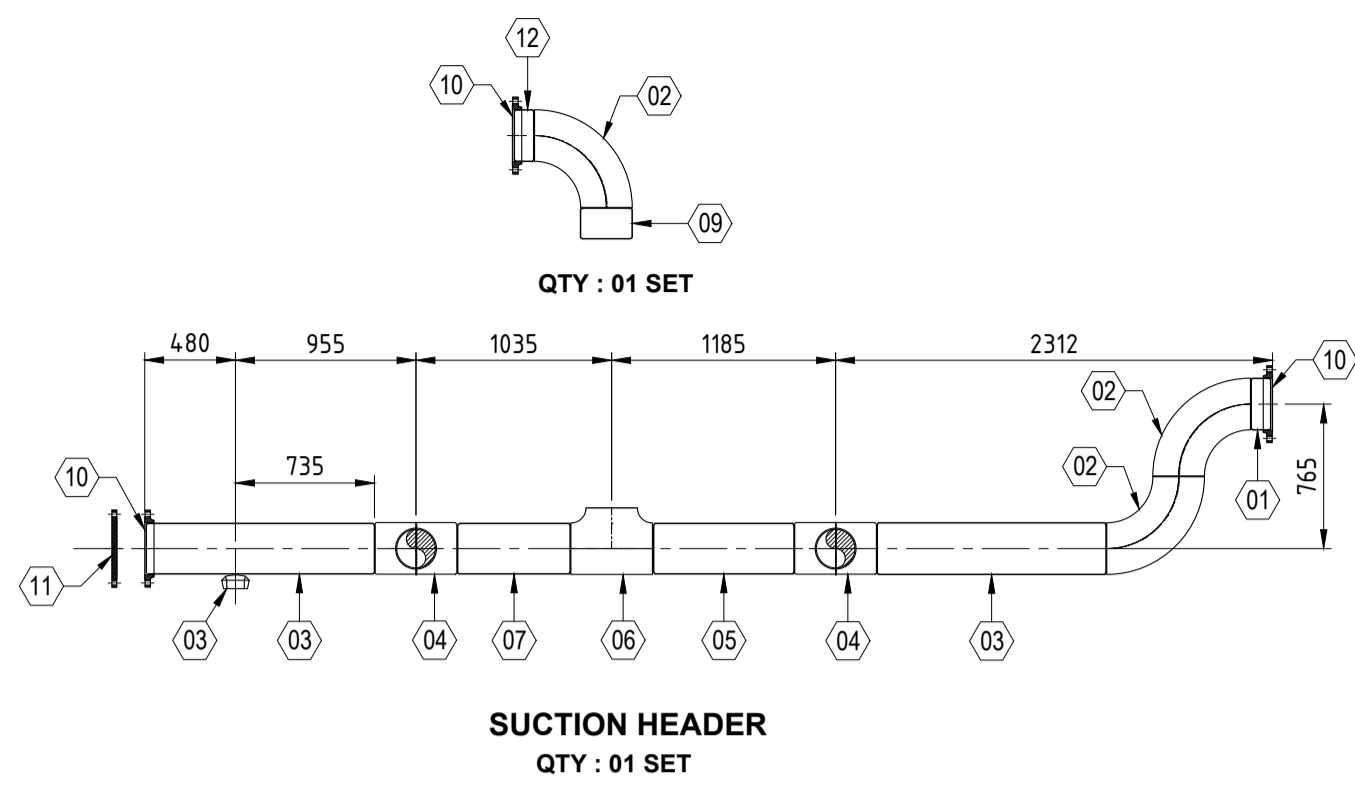
SECTION B-B



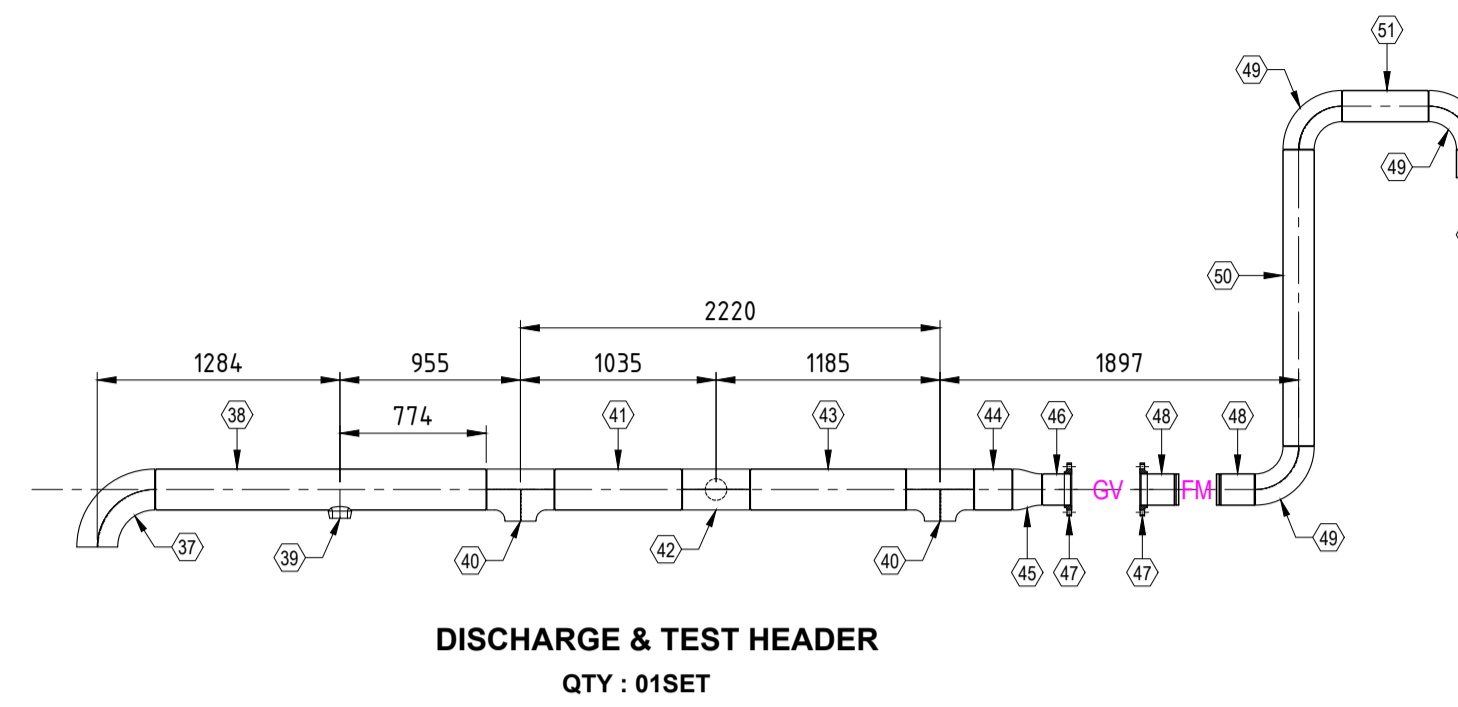
SECTION C-C



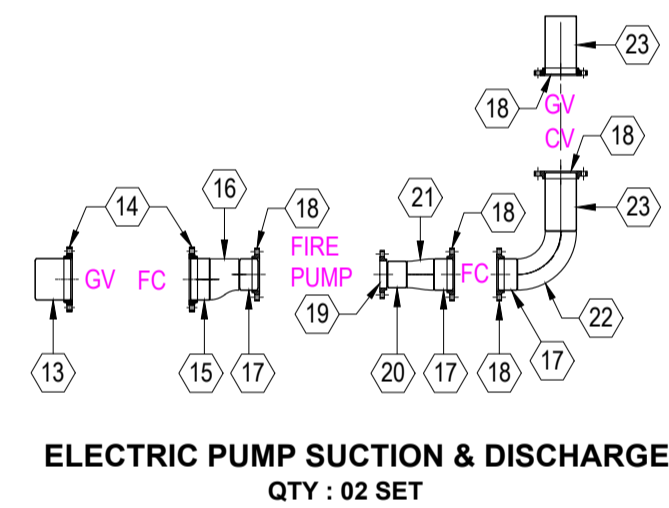
SECTION D-D



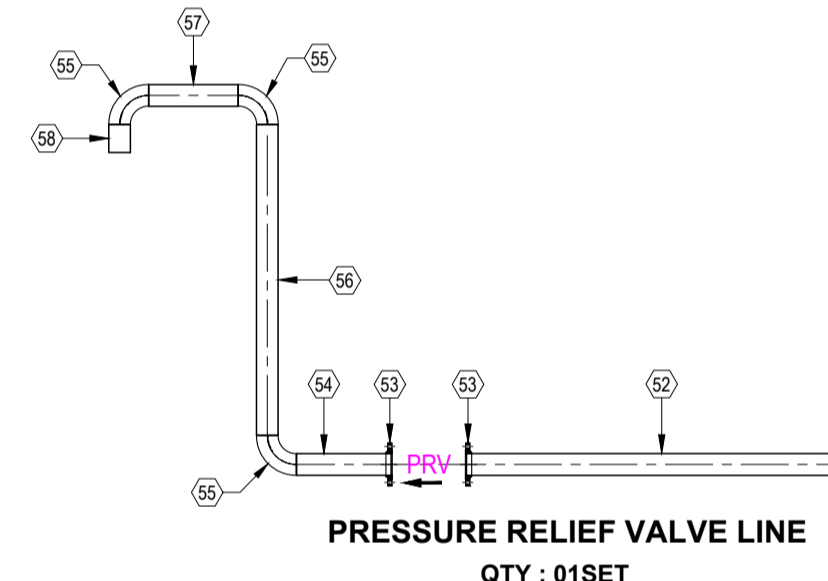
TAG NO.	DESCRIPTION	QTY	REMARKS
01	BLACK STEEL PIPE, ASTM A53/A53M, SCH 40 SIZE: DN250 (10"), LENGTH: 100 mm	01	
02	ELBOW 90°, BUTT WELD-ON, SCH 40 PIPE, LONG RADIUS (LR), DN 250(10")	03	
03	BLACK STEEL PIPE, ASTM A53/A53M, SCH 40 SIZE: DN250 (10"), LENGTH: 1210 mm	02	
04	TEE, REDUCING, BUTT WELD-ON, SCH 40 PIPE, DN250xDN200 (10"x8")	02	
05	BLACK STEEL PIPE, ASTM A53/A53M, SCH 40 SIZE: DN250 (10"), LENGTH: 742 mm	01	
06	TEE, EQUAL, BUTT WELD-ON, SCH 40 PIPE, DN250xDN250 (10"x10")	01	
07	BLACK STEEL PIPE, ASTM A53/A53M, SCH 40 SIZE: DN250 (10"), LENGTH: 595 mm	01	
08	Weldolet, BUTT WELD, SCH 40, ASTM A105 (CARBON STEEL), SIZE: DN 80 (3")	01	735 mm FROM ONE SIDE
09	BLACK STEEL PIPE, ASTM A53/A53M, SCH 40 SIZE: DN250 (10"), LENGTH: 162 mm	01	
10	SLIP-ON FLANGE, RF STD ANSI B16.5 CLASS 150, SIZE: DN250 (10")	03	
11	BLIND FLANGE RF STD ANSI B16.5 CLASS 150, SIZE: DN250 (10")	01	
12	BLACK STEEL PIPE, ASTM A53/A53M, SCH 40 SIZE: DN250 (10"), LENGTH: 100 mm	01	



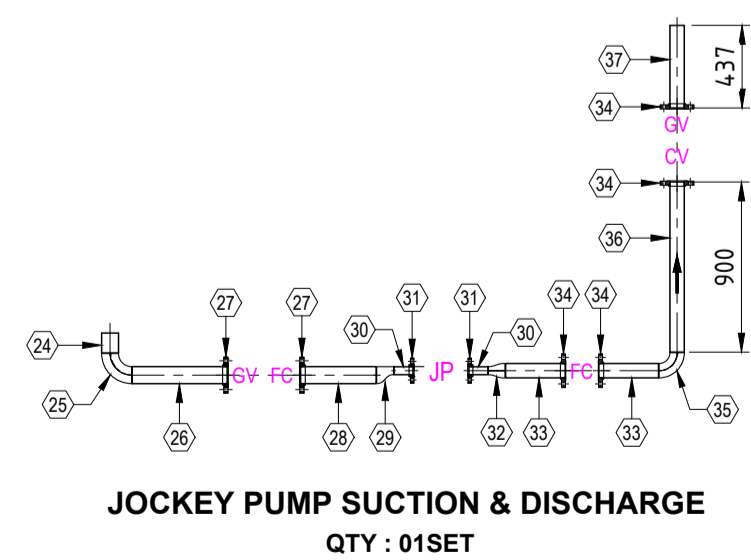
TAG NO.	DESCRIPTION	QTY	REMARKS
37	ELBOW 90°, BUTT WELD-ON, SCH 40 PIPE, LONG RADIUS (LR), DN 200 (8")	01	
38	BLACK STEEL PIPE, ASTM A53/A53M, SCH 40 SIZE: DN200 (8"), LENGTH: 1750 mm	01	
39	Weldolet, BUTT WELD, SCH 40, ASTM A105 (CARBON STEEL), SIZE: DN 65 (2.5")	01	774 mm FROM ONE SIDE
40	TEE, REDUCING, BUTT WELD-ON, SCH 40 PIPE, DN200xDN150 (8"x6")	02	
41	BLACK STEEL PIPE, ASTM A53/A53M, SCH 40 SIZE: DN200 (8"), LENGTH: 672 mm	01	
42	TEE, REDUCING, BUTT WELD-ON, SCH 40 PIPE, DN200xDN100 (8"x4")	01	
43	BLACK STEEL PIPE, ASTM A53/A53M, SCH 40 SIZE: DN200 (8"), LENGTH: 822 mm	01	
44	BLACK STEEL PIPE, ASTM A53/A53M, SCH 40 SIZE: DN200 (8"), LENGTH: 200 mm	01	
45	CONCENTRIC REDUCER, BUTT WELD-ON, SCH 40 PIPE, DN200xDN150 (8"x6")	01	
46	BLACK STEEL PIPE, ASTM A53/A53M, SCH 40 SIZE: DN150 (6"), LENGTH: 150 mm	02	
47	SLIP-ON FLANGE, RF STD ANSI B16.5 CLASS 150, SIZE: DN150 (6")	02	
48	BLACK STEEL PIPE, ASTM A53/A53M, SCH 40 SIZE: DN150 (6"), LENGTH: 200 mm	02	GROOVED AT ONE END
49	ELBOW 90°, BUTT WELD-ON, SCH 40 PIPE, LONG RADIUS (LR), DN 150 (6")	03	
50	BLACK STEEL PIPE, ASTM A53/A53M, SCH 40 SIZE: DN150 (6"), LENGTH: 1585 mm	01	
51	BLACK STEEL PIPE, ASTM A53/A53M, SCH 40 SIZE: DN150 (6"), LENGTH: 456 mm	01	



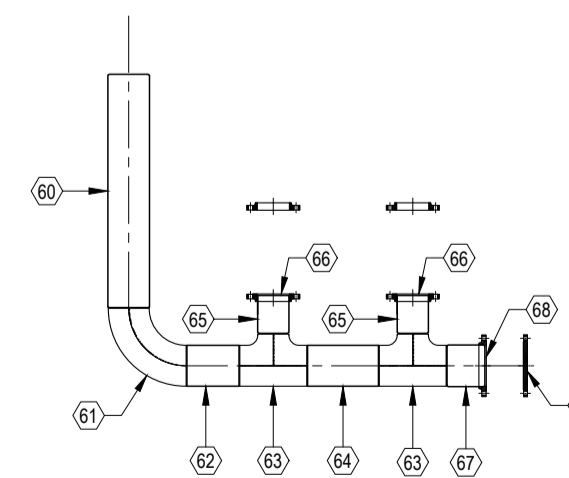
TAG NO.	DESCRIPTION	QTY	REMARKS
13	BLACK STEEL PIPE, ASTM A53/A53M, SCH 40 SIZE: DN200 (8"), LENGTH: 150 mm	02	
14	SLIP-ON FLANGE, RF STD ANSI B16.5 CLASS 150, SIZE: DN200 (8")	04	
15	BLACK STEEL PIPE, ASTM A53/A53M, SCH 40 SIZE: DN250 (10"), LENGTH: 100 mm	02	
16	ECCENTRIC REDUCER, BUTT WELD-ON, SCH 40 PIPE, DN200xDN150 (8"x6")	02	
17	BLACK STEEL PIPE, ASTM A53/A53M, SCH 40 SIZE: DN150 (6"), LENGTH: 100 mm	06	
18	SLIP-ON FLANGE, RF STD ANSI B16.5 CLASS 150, SIZE: DN150 (6")	10	
19	SLIP-ON FLANGE, RF STD ANSI B16.5 CLASS 150, SIZE: DN125 (5")	02	
20	BLACK STEEL PIPE, ASTM A53/A53M, SCH 40 SIZE: DN125 (5"), LENGTH: 100 mm	02	
21	CONCENTRIC REDUCER, BUTT WELD-ON, SCH 40 PIPE, DN150xDN125 (6"x5")	02	
22	ELBOW 90°, BUTT WELD-ON, SCH 40 PIPE, LONG RADIUS (LR), DN 150(6")	02	
23	BLACK STEEL PIPE, ASTM A53/A53M, SCH 40 SIZE: DN150 (6"), LENGTH: 308 mm	04	



TAG NO.	DESCRIPTION	QTY	REMARKS
52	BLACK STEEL PIPE, ASTM A53/A53M, SCH 40 SIZE: DN100 (4"), LENGTH: 2000 mm	01	
53	SLIP-ON FLANGE, RF STD ANSI B16.5 CLASS 150, SIZE: DN100 (4")	02	
54	BLACK STEEL PIPE, ASTM A53/A53M, SCH 40 SIZE: DN100 (4"), LENGTH: 500 mm	01	
55	ELBOW 90°, BUTT WELD-ON, SCH 40 PIPE, LONG RADIUS (LR), DN 100 (4")	03	
56	BLACK STEEL PIPE, ASTM A53/A53M, SCH 40 SIZE: DN100 (4"), LENGTH: 1642 mm	01	
57	BLACK STEEL PIPE, ASTM A53/A53M, SCH 40 SIZE: DN100 (4"), LENGTH: 470 mm	01	
58	BLACK STEEL PIPE, ASTM A53/A53M, SCH 40 SIZE: DN100 (4"), LENGTH: 150 mm	01	



TAG NO.	DESCRIPTION	QTY	REMARKS
24	BLACK STEEL PIPE, ASTM A53/A53M, SCH 40 SIZE: DN80 (3"), LENGTH: 105 mm	01	
25	ELBOW 90°, BUTT WELD-ON, SCH 40 PIPE, LONG RADIUS (LR), DN 80(3")	01	
26	BLACK STEEL PIPE, ASTM A53/A53M, SCH 40 SIZE: DN80 (3"), LENGTH: 500 mm	01	
27	SLIP-ON FLANGE, RF STD ANSI B16.5 CLASS 150, SIZE: DN80 (3")	02	
28	BLACK STEEL PIPE, ASTM A53/A53M, SCH 40 SIZE: DN80 (3"), LENGTH: 400 mm	01	
29	ECCENTRIC REDUCER, BUTT WELD-ON, SCH 40 PIPE, DN80xDN32 (3"x1.25")	01	
30	BLACK STEEL PIPE, ASTM A53/A53M, SCH 40 SIZE: DN32 (1.25"), LENGTH: 100 mm	02	
31	SLIP-ON FLANGE, RF STD ANSI B16.5 CLASS 300, SIZE: DN32 (1.25")	01	
32	CONCENTRIC REDUCER, BUTT WELD-ON, SCH 40 PIPE, DN80xDN32 (3"x1.25")	01	
33	BLACK STEEL PIPE, ASTM A53/A53M, SCH 40 SIZE: DN65 (2.5"), LENGTH: 315 mm	02	
34	SLIP-ON FLANGE, RF STD ANSI B16.5 CLASS 150, SIZE: DN65 (2.5")	04	
35	ELBOW 90°, BUTT WELD-ON, SCH 40 PIPE, LONG RADIUS (LR), DN65 (2.5")	01	
36	BLACK STEEL PIPE, ASTM A53/A53M, SCH 40 SIZE: DN65 (2.5"), LENGTH: 300 mm	01	
37	BLACK STEEL PIPE, ASTM A53/A53M, SCH 40 SIZE: DN65 (2.5"), LENGTH: 437 mm	01	



TAG NO.	DESCRIPTION	QTY	REMARKS
60	BLACK STEEL PIPE, ASTM A53/A53M, SCH 40 SIZE: DN200 (8"), LENGTH: 1234 mm	01	
61	ELBOW 90°, BUTT WELD-ON, SCH 40 PIPE, LONG RADIUS (LR), DN 200 (8")	01	
62	BLACK STEEL PIPE, ASTM A53/A53M, SCH 40 SIZE: DN200 (8"), LENGTH: 278 mm	01	
63	TEE, REDUCING, BUTT WELD-ON, SCH 40 PIPE, DN200xDN150 (8"x6")	02	
64	BLACK STEEL PIPE, ASTM A53/A53M, SCH 40 SIZE: DN200 (8"), LENGTH: 375 mm	01	
65	BLACK STEEL PIPE, ASTM A53/A53M, SCH 40 SIZE: DN200 (8"), LENGTH: 200 mm	02	
66	SLIP-ON FLANGE, RF STD ANSI B16.5 CLASS 150, SIZE: DN150 (6")	04	
67	BLACK STEEL PIPE, ASTM A53/A53M, SCH 40 SIZE: DN200 (8"), LENGTH: 200 mm	01	
68	SLIP-ON FLANGE, RF STD ANSI B16.5 CLASS 150, SIZE: DN200 (8")	01	
69	BLIND FLANGE RF STD ANSI B16.5 CLASS 150, SIZE: DN200 (8")	01	

BS FITTING MASTER LIST

S. NO.	DESCRIPTION	QTY
	ELBOW 90°, BUTT WELD-ON, SCH 40 PIPE, LONG RADIUS (LR)	
01	DN 250(10")	03
02	DN 200(8")	02
03	DN 150(6")	05
04	DN 100(4")	03
05	DN 80(3")	01
06	DN 65(2.5")	01
	TEE, REDUCING, BUTT WELD-ON, SCH 40 PIPE,	
07	DN250xDN200 (10"x8")	02
08	DN200xDN150 (8"x6")	04
09	DN200xDN100 (8"x4")	01
10	DN250xDN250 (10"x10")	01
	Weldolet, BUTT WELD, SCH 40, ASTM A105 (CARBON STEEL)	
11	DN80 (3")	01
12	DN65 (2.5")	01
	ECCENTRIC REDUCER, BUTT WELD-ON, SCH 40 PIPE	
13	DN200xDN150 (8"x6")	02
14	DN80xDN32 (3"x1.25")	01
	CONCENTRIC REDUCER, BUTT WELD-ON, SCH 40 PIPE	
15	DN200xDN150 (8"x6")	01
16	DN150xDN125 (6"x5")	02
17	DN65xDN32 (2.5"x1.25")	01
	SLIP-ON FLANGE, RF STD ANSI B16.5, CLASS 150	
18	DN 250(10")	03
19	DN 200(8")	05
20	DN 150(6")	16
21	DN 125(5")	02
22	DN 100(4")	02
23	DN 80(3")	02
24	DN 65(2.5")	04
	BLIND FLANGE RF STD ANSI B16.5 CLASS 150	
25	DN 250(10")	01
26	DN 200(8")	01
	SLIP-ON FLANGE, RF STD ANSI B16.5, CLASS 300	
27	DN 32(1.25")	02

PIPE MASTER LIST

S. NO.	DESCRIPTION	QTY
	BLACK STEEL PIPE, ASTM A53/A53M, SCH 40	
01	DN 250(10")	4120 mm
02	DN 200(8")	6110 mm
03	DN 150(6")	4954 mm
04	DN 125(5")	200 mm
05	DN 100(4")	4762 mm
06	DN 80(3")	1006 mm
07	DN 65(2.5")	1068 mm
08	DN 32(1.25")	200 mm